

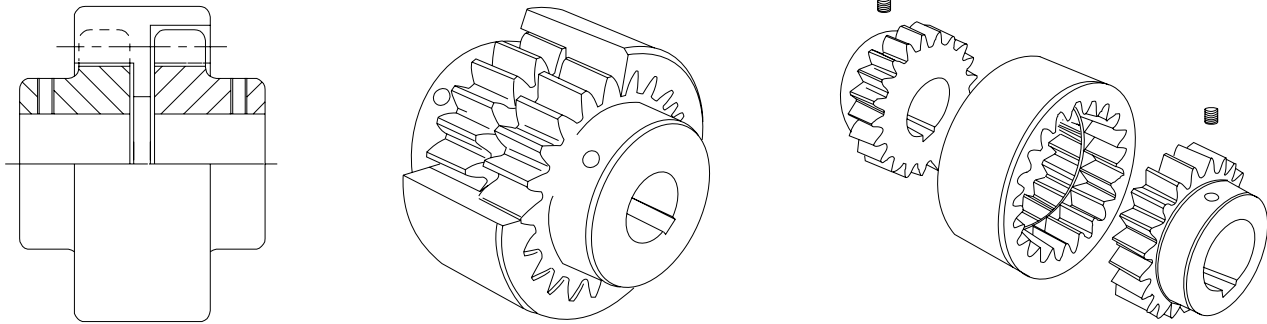
# NYLICON

## GEAR COUPLINGS WITH NYLON SLEEVE

# COUPLINGS

## NYLICON COUPLINGS

### Gear Couplings with Nylon Sleeve



### General Description

Nylicon flexible gear couplings, types X600, are available in three sizes and are ideal for small power drives with bore sizes up to 55mm (2.25 inches) diameter and a basic rated torque up to 463 Nm.

### Uniform Loading

Thermosetting plastic sleeves provide non conductive assemblies. Staggered internal teeth ensure uniform loading and an internal central buffer ring between the two hubs promote axial location giving protection to the gear teeth.

### Low Cost Option

They compensate for all types of shaft misalignment and allow a small amount of end float. Nylicon couplings are easy to assemble and require no maintenance giving low cost reliable service under the most arduous conditions of weather, atmospheric pollution or humidity.

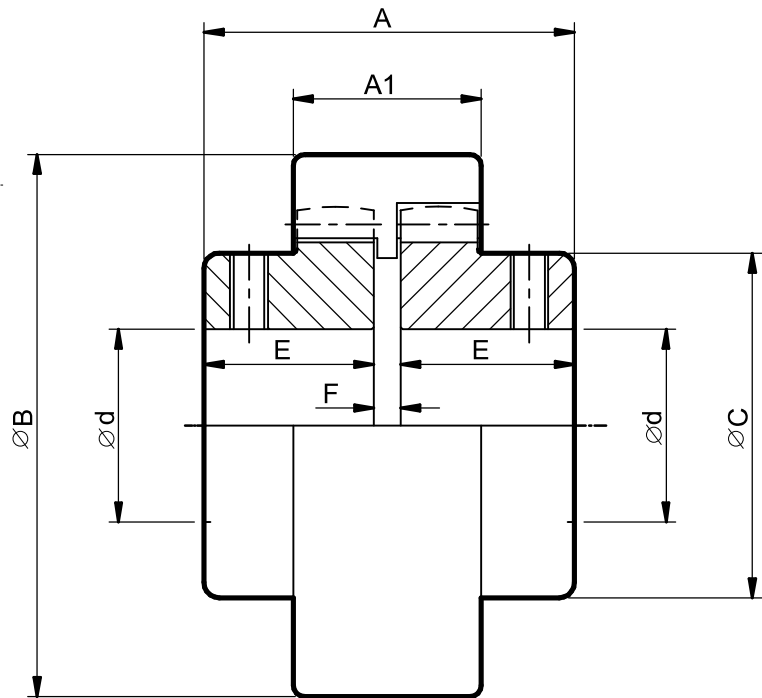
### Specification




Nylicon couplings are available pilot bored (i.e. without keyways) allowing the customer to finish machine bores and keyways to special requirements, or supplied with standard bores and keyways. Each size of coupling can have any combination of pilot and/or standard bores. Socket set screws and setting gauge are provided with each coupling.

# COUPLINGS

## NYLICON COUPLINGS

### Nylicon Gear Couplings with Nylicon Sleeve



	Tk daNm	P / N kW/rpm	A mm	A1 mm	ØB mm	ØC mm	Ød mm	E mm	F mm	 < °	 +/- mm	 kg	J kgm <sup>2</sup>	N max rpm
01	5.65	0.006	50	28	64	39	12 - 25 (10)	22	6	0.75	0.20	0.5	0.001	4000
02	22.0	0.023	76	42	89	58	18 - 38 (15)	35	6	0.75	0.20	1.68	0.048	3410
03	46.3	0.048	104	56	115	78	30 - 55 (28)	48	8	0.75	0.35	4.35	0.017	2630