



COUPLINGS

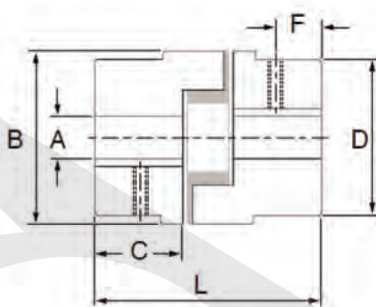


JAW COUPLING

Description

Jaw coupling flanges are available either pilot bored (PB) which can be bored in house to the required shaft size they are also conveniently held in stock in all popular metric and imperial bore sizes with corresponding key way and 2 grub screws at 90° to each other for securing to a shaft.

They suit general purpose applications that cater for misalignment, shock loads and damp out small amplitude vibrations.



JAW COUPLING SECTION

Coupling No.	Nominal torque (Nm)	Pilot Bore A (mm)	Max Bore A (mm)	Overall Diameter B	Assembled Length L	Hub Width C	Hub Diameter D	Set Screw Position F	Size	Complete Weight (kg)
L035	-	3	8	16.0	20	7	16.0	3.0	M3	0.06
L050	3.51	6	14	27.5	44	16	27.5	6.5	M6	0.10
L070	5.77	9	19	35.0	51	19	35.0	9.5	M6	0.25
L075	11.90	9	24	44.5	54	21	44.5	8.0	M6	0.45
L090	19.20	9	24	54.0	54	21	54.0	8.7	M6	0.55
L095	25.80	9	28	54.0	64	25	54.0	11.5	M6	0.65
L100	55.40	12	35	65.0	89	35	65.0	12.5	M8	1.60
L110	105.00	15	42	84.0	108	43	84.0	20.5	M10	3.00
L150	150.00	15	48	96.0	115	45	96.0	22.5	M10	4.90
L190	200.00	19	55	115.0	133	54	102.0	22.5	M12	7.00
L225	280.00	19	60	127.0	153	64	108.0	25.5	M12	9.00

Angular misalignment capacity up to 1 deg.

Parallel misalignment capacity up to 0.38mm

Mass is for a complete coupling with a pilot bore

Nitrile insert temperature range -40°C to 100°C