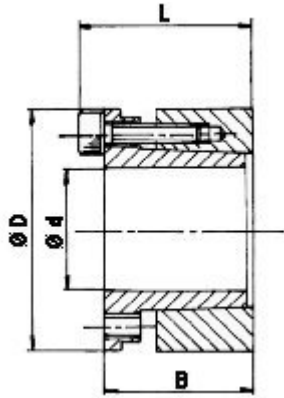


DRIVELOCK[®] 70 BUSHES



- self centering
- high torques
- 353 to 40500 Nm
- bores 19 to 180mm

DRIVELOCK 70					T _s Nm	T Nm	F kN	p N/mm ²
d (h8) (mm)	D (mm)	M (mm)	L (mm)	B (mm)				
19	47	M6	45	39	17	353	37	98
20	47	M6	45	39	17	382	37	98
22	47	M6	45	39	17	431	37	93
24	50	M6	45	39	17	519	43	102
25	50	M6	45	39	17	578	43	102
28	55	M6	45	39	17	686	48	107
30	55	M6	45	39	17	745	48	117
32	60	M6	45	39	17	912	58	111
35	60	M6	45	39	17	1010	58	116
38	65	M6	45	39	17	1216	64	121
40	65	M6	45	39	17	1323	64	122
42	75	M6	55	47	41	2128	96	137
45	75	M8	55	47	41	2304	96	137
48	80	M8	55	47	41	2461	100	132
50	80	M8	55	47	41	2530	100	132
55	85	M8	55	47	41	3138	113	142
60	90	M8	55	47	41	3314	115	153
65	95	M8	55	47	41	4079	125	137
70	110	M10	67	57	83	6707	184	140
75	115	M10	72	62	83	7354	192	135
80	120	M10	72	62	83	7943	192	127
85	125	M10	72	62	83	9512	225	142
90	130	M10	72	62	83	10100	225	135
95	135	M10	72	62	83	11865	250	145

DRIVELOCK 70					T _s Nm	T Nm	F kN	p N/mm ²
d (h8) (mm)	D (mm)	M (mm)	L (mm)	B (mm)				
100	145	M12	89	77	145	15396	309	145
110	155	M12	89	77	145	16867	309	136
120	165	M12	89	77	145	22064	370	152
130	180	M12	89	77	145	23535	388	137
140	190	M14	90	84	230	30210	429	142
150	200	M14	90	84	230	36440	481	150
160	210	M14	90	84	230	39730	500	150
170	225	M14	90	84	230	40120	500	120
180	235	M14	90	84	230	40500	500	117

Glossary		Machining Data			
T _s (Nm)	Screw/bolt tightening torque	Recommended shaft & hub tolerances for full torque transmission are :			
T (Nm)	Torque transmissible with tightening torque T _s	All shafts	h8 except	All hubs	H8
F (Nm)	Force transmissible with tightening torque T _s	DL40 shaft DL50* shaft	h9 h6	DL40 hub DL50* hub	H9 H7
P (N/mm ²)	Hub/shaft surface pressure	* DL50 < 40mm diam.			

